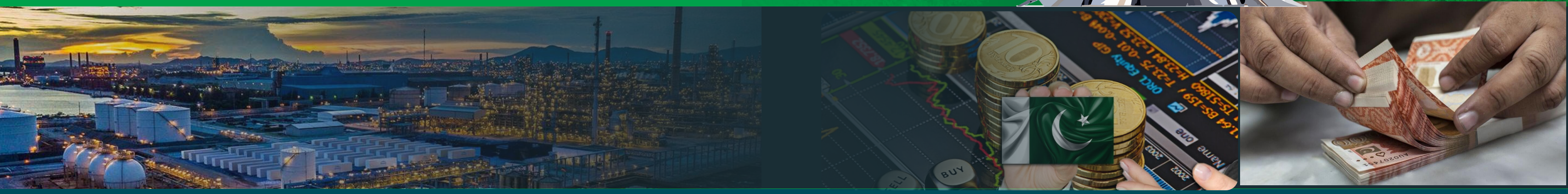


Pakistan's Journey

Agriculture has remained a stable backbone for Pakistan's economy.



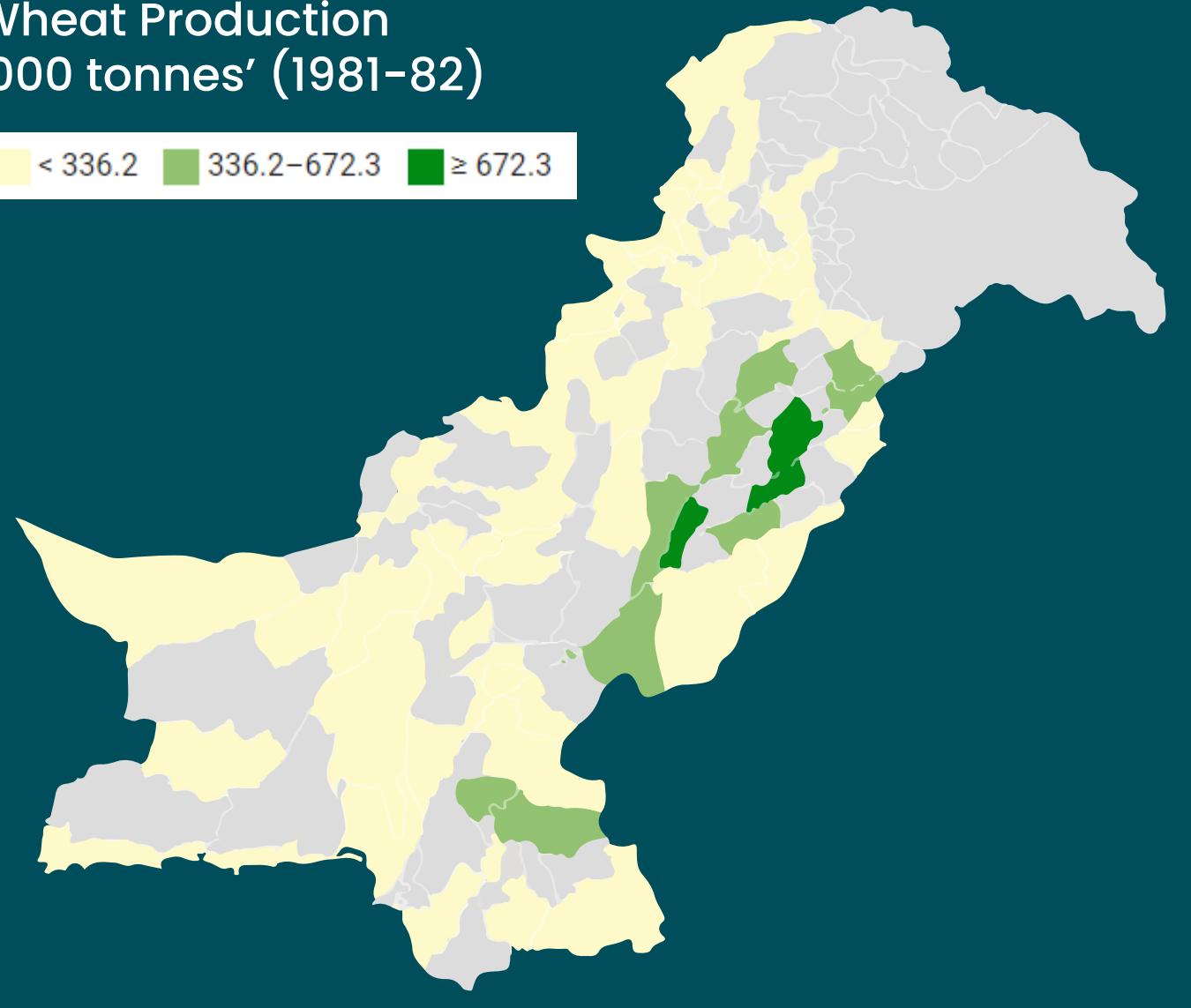
NATIONAL AVERAGE YIELD

in 1981-82 Stood at 15.83 Maund/Acre

Source: PACRA

Wheat Production '000 tonnes' (1981-82)

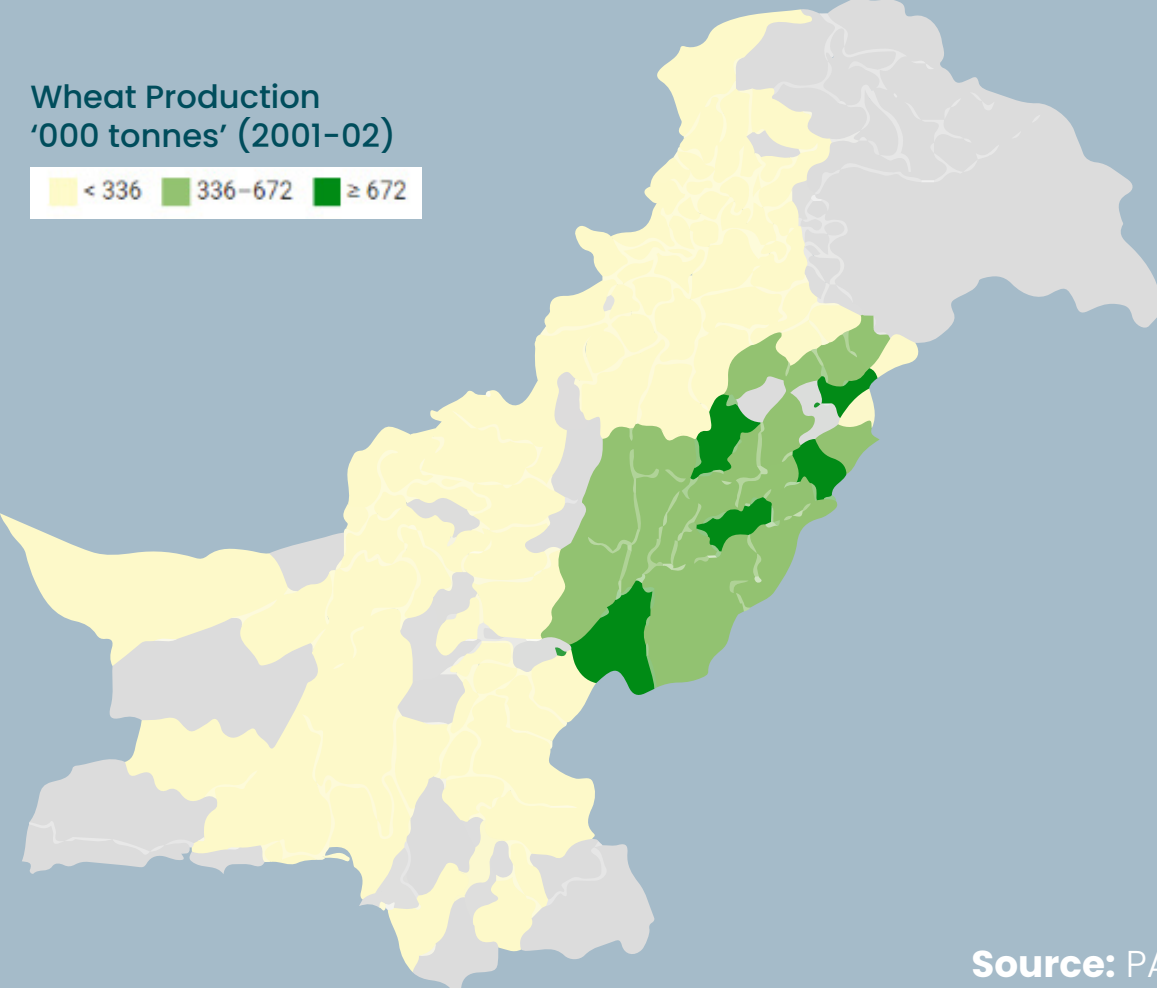
< 336.2 336.2-672.3 ≥ 672.3



IN 20 YEARS, PRODUCTION GREW BY **68%**

Wheat Production '000 tonnes' (2001-02)

< 336 336-672 ≥ 672

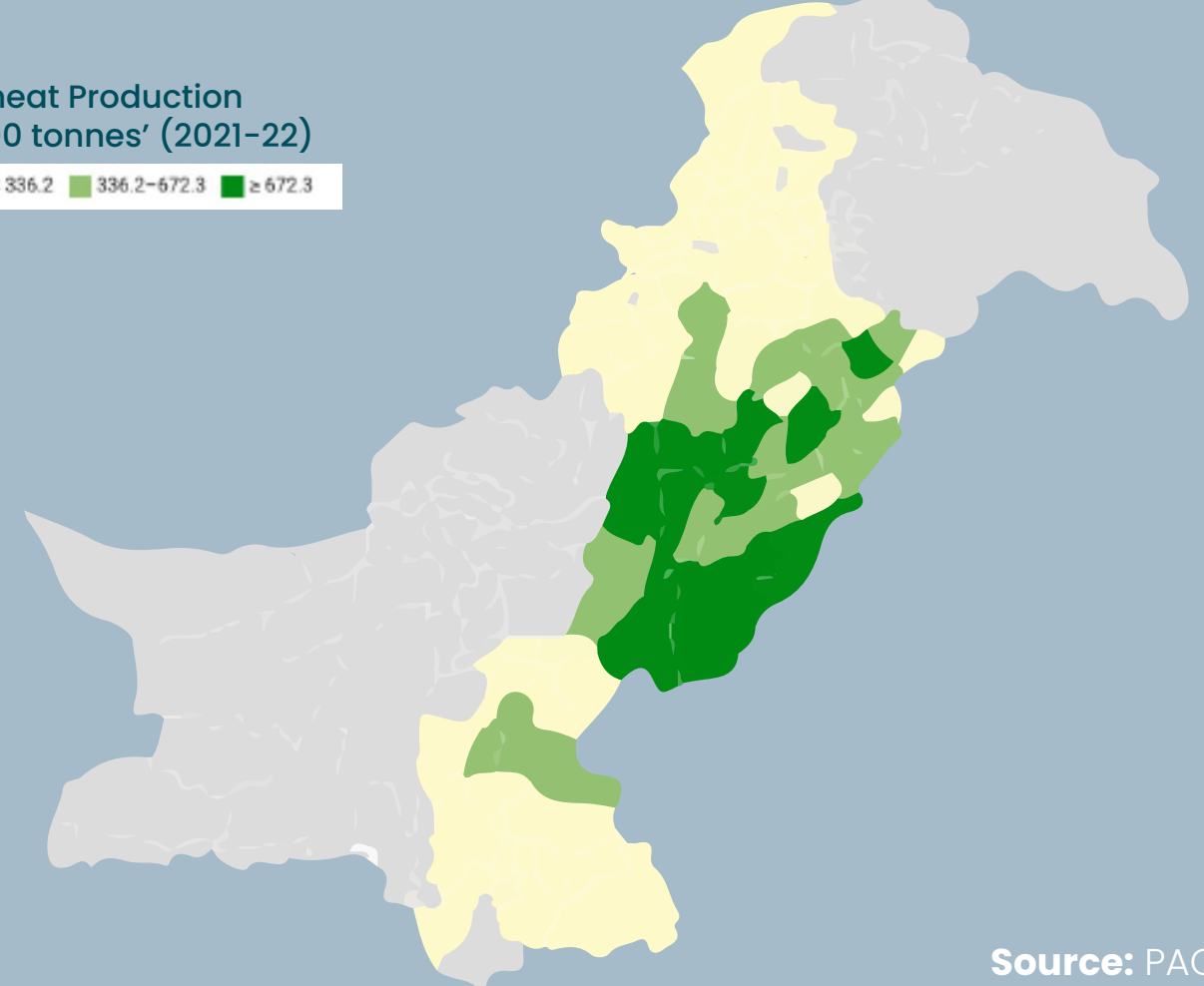


Source: PACRA

Currently, Average Yield in **Sindh** is the Highest in the Country

Wheat Production '000 tonnes' (2021-22)

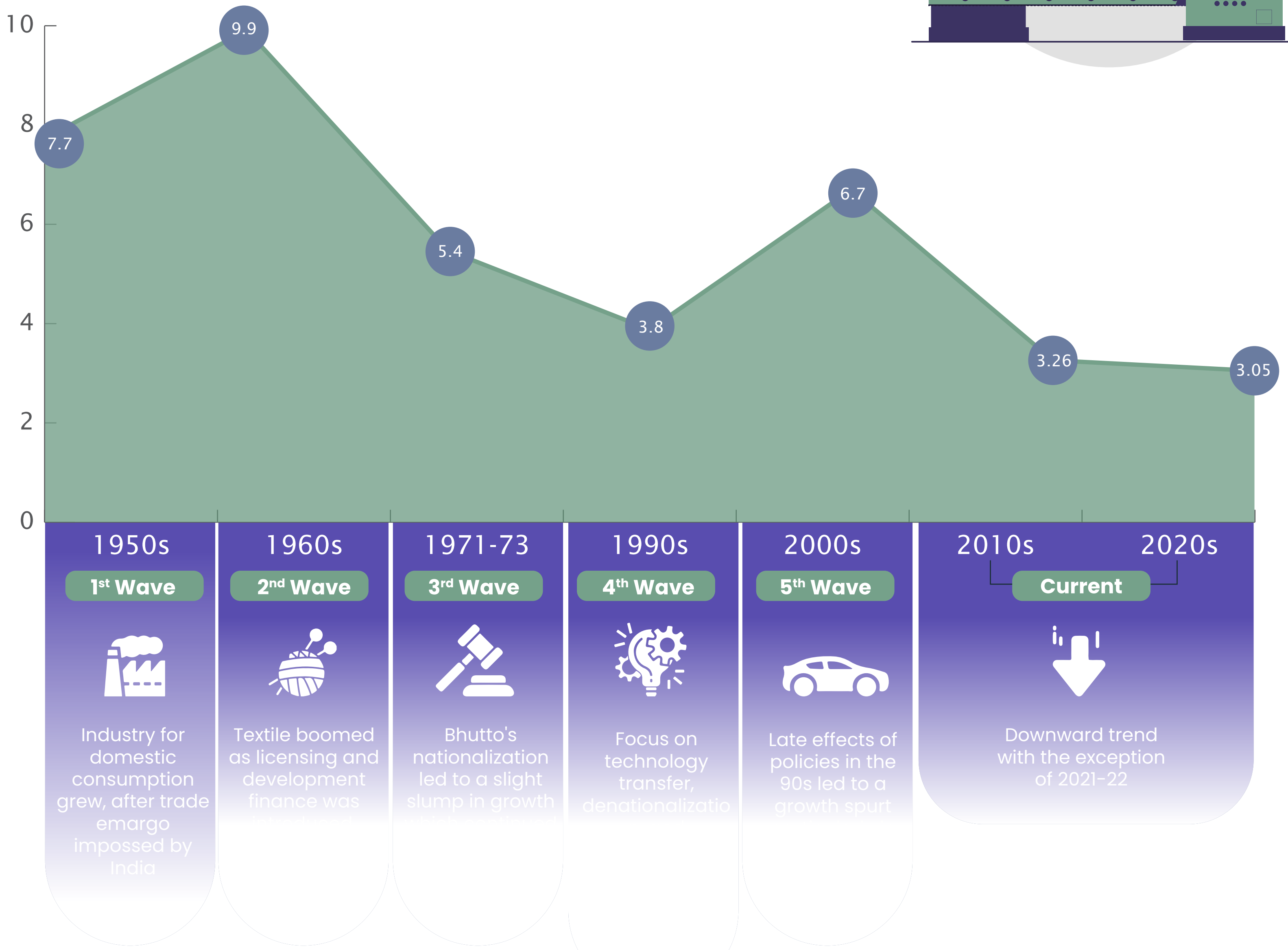
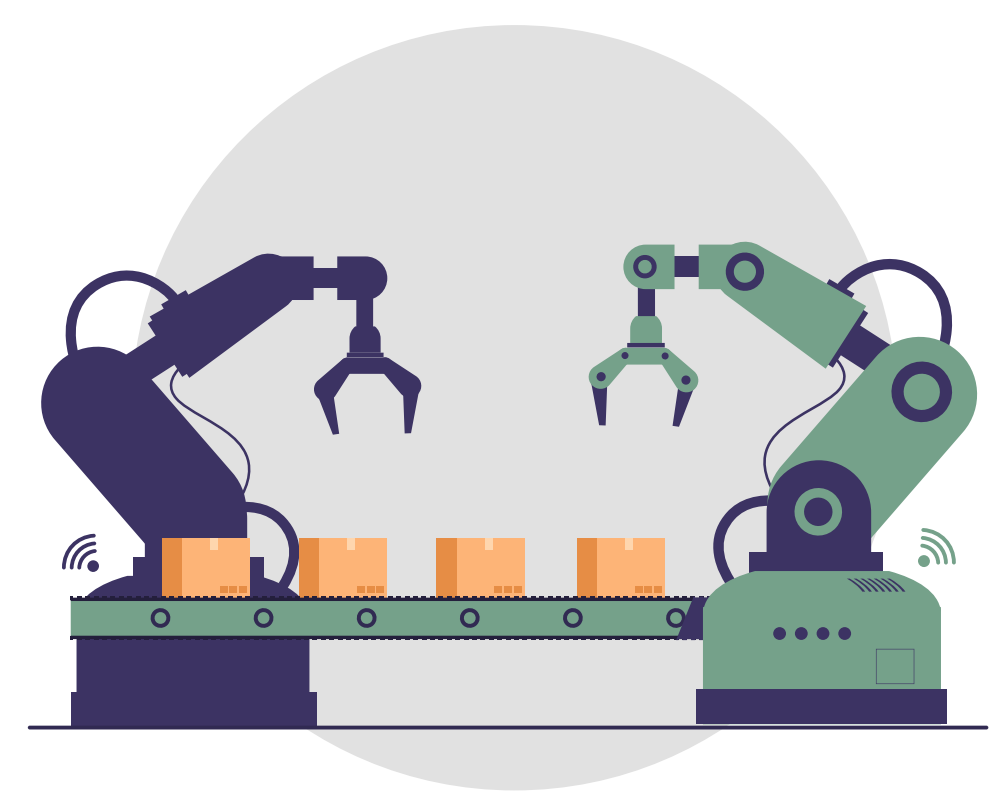
< 336.2 336.2-672.3 ≥ 672.3



Source: PACRA

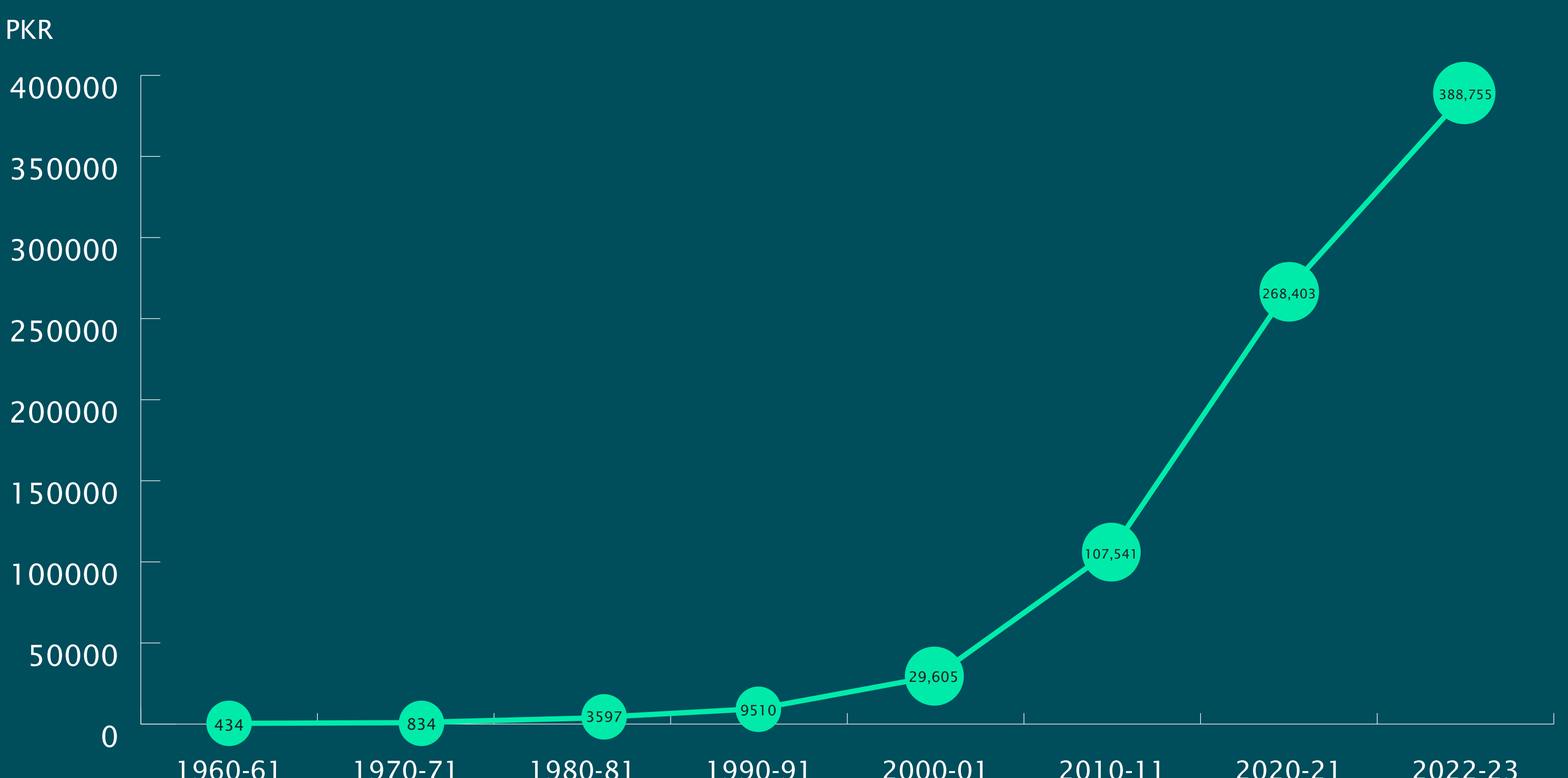
Pakistan's Industrial Evolution Since 1950

Manufacturing Sector Growth Rate % (FC)



Source: PBS, MoF

Pakistan's Per Capital Income Observed Massive Growth Between 1990 to 2000s



Note: Per capita income isn't an indicator of equitable GDP growth distribution

Source: PBS, MoF